

Maritime Museum Index

1. **Bunce Island, 1805**

The original watercolour for the coloured aquatint published in Corry's 'Observations upon the Windward coast of Africa' (London 1807). Bunce Island was once the property of the Royal African Company, lying 15 miles up stream of the mouth of the Sierra Leone River. In 1749 it was acquired by a group of London merchants. 'They rehabilitated the fort, built dwellings for local factors and slave pens; eventually they constructed Africa's first golf course in the 1770s, making the island, so far as visiting merchants and captains were concerned, the most agreeable spot for slave trading on the coast. One visitor described the sportsmen dressed in whites, attended by African caddies in tartan loincloths; golf was, he declared, 'very pretty exercise', after which they would repair to a meal of roast ape, antelope or boar washed down with Madeira wine'. (Blackburn, 'The Making of New World Slaver', p.389). Approximately 13,000 slaves were dispatched to the Americas from here between 1748-84. Part of the Michael Graham-Stewart slavery collection.

Date made: circa 1805

Artist/Maker: Corry, Joseph

Credit: National Maritime Museum, Greenwich, London, Michael Graham-Stewart Slavery Collection. Acquired with the assistance of the Heritage Lottery Fund

Materials: watercolour

Measurements: sheet: 355 mm x 505 mm

Parts - • 'Bunce Island, River Sierra Leone, Coast of Africa' (ZBA2744)

2. **Regent Town, Freetown, 1821**

3. **Bathurst, Sierra Leone, 1829**

4. **Freetown, 1838**

5. **Hastings, Sierra Leone, 1843**

6. **Liberated African with Mandingoes, 1852**

7. **Mr. Beale Seizing Egugu, 1853**

8. **Graveyard, Kissy, Sierra Leone, 1853**

9. **Christ Church, Freetown, 1856**
10. **Sherbro Village, 1856**
11. **Kissy, Sierra Leone, 1860** - Kissy. Landing Slaves from prize to 'Spitfire'
12. **York, Sierra Leone, 1865**
13. **Banana Islands, 1865**
14. **Kent, Sierra Leone, 1865**
15. **The Egugu, 1881**
16. **Waterloo, Sierra Leone, 1881**
17. **Rev. Samuel Ajayi Crowther, 1860s** - Samuel Ajayi Crowther (c. 1809–31 December 1891) was a linguist and the first African Anglican bishop in Nigeria. Born in Osogun (in what is now Iseyin Local Government, Oyo State, Nigeria), Crowther was a Yoruba who also identified with Sierra Leone's ascendant Creole ethnic group.
18. **Rev. Samuel Ajayi Crowther, 1867** - O bispo anglicano Samuel Ajayi Crowther, na Lambeth Conference, 1867 (Anglican Bishop, Samuel Ajayi Crowther at the Lambeth Conference, 1867)
19. **Freetown, c. 1870**
20. **Landing Pier, Freetown, c. 1870**
21. **Harbor, Freetown, c. 1870**
22. **Secretary's Quarters, Freetown, c. 1870**
23. **Mission House, Freetown, c. 1870**
24. **Gaol, Freetown, c. 1870**
25. **St. George's Cathedral, Freetown, c. 1870**
26. **St. George's Cathedral, Freetown, c. 1870**
27. **St. Edward's Primary, Freetown, c. 1870**
28. **St. Edward's Primary, Freetown, c. 1870**

- 29. **Wesleyan College, Freetown, c. 1870**
- 30. **Colonial Hospital, Freetown, c. 1870**
- 31. **Colonial Hospital, Freetown, c. 1870**
- 32. **House in Bathurst, Sierra Leone, c. 1870**
- 33. **School in Charlotte, Sierra Leone, c. 1870**
- 34. **Road to Charlotte, Sierra Leone, c. 1870**
- 35. **Vigilante, Bonny, 1823 (ID 2734).**

The print shows plan and sections of the 'Vigilante', indicating the dreadful conditions in which people were transported across the Atlantic Ocean. The 'Vigilante' was captured by the Royal Navy off the coast of Africa in 1822, carrying 345 Africans bound for slavery in the Americas. The caption reads: 'The representation of the brig Vigilante from Nantes, a vessel employed in the slave trade, which was captured by Lieutenant Mildmay, in the River Bonny, on the coast of Africa, on the 15th of April 1822. She was 240 tons burden & had on board, at the time she was taken 345 slaves. The slaves were found lying on their backs on the lower deck, as represented below, those in the centre were sitting some in the posture in which they are shown & others with their legs bent under them, resting upon the soles of their feet'. The Royal Navy squadron that captured the 'Vigilante' also seized a further six French and Spanish slave ships in a very successful action. Nantes was the main French slave-trading port. Anti-slavery campaigners used this print to remind the public of how extraordinarily cramped conditions were on slave ships. The image also shows how men and women were segregated on board. The men are shown restrained in pairs with handcuffs and leg-irons.

Date made: 1823

Artist/Maker: Hawksworth, J./ Croad, S.

Credit: National Maritime Museum, Greenwich, London

Materials: etching

Measurements

Sheet: 588 mm x 483 mm; Image: 551 mm x 440 mm; Mount: 835 mm x 608 mm

Parts: Representation of the brig 'Vigilante' (PAH7370)

- 36. **Liberated Africans, Gambia, 1837**

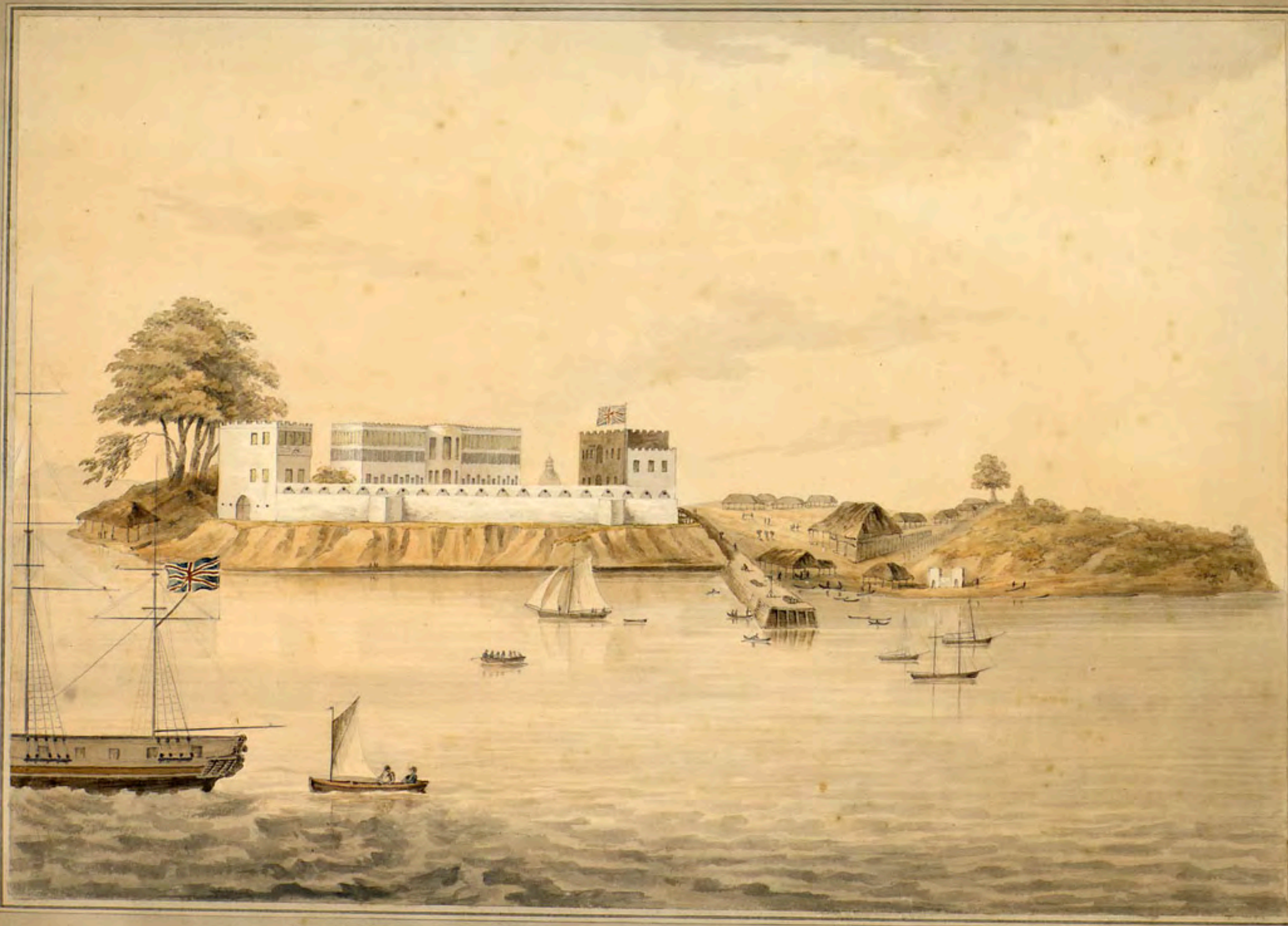
37. Barracoon, Gallinas, 1849

38. Pacote do Rio, Gallinas, 1846 (ID 3598)

39. Liberated African Yard, Bathurst, Gambia, c. 1870



Bance Island River Sierra Leone Coast of Africa Perspective point at A



Bance Island, Sierra Leone (Coast of Africa) Prospect from the sea

W. H. H. H.



PART OF REGENT-S TOWN, A SETTLEMENT OF LIBERATED NEGROES, IN THE COLONY OF SIERRA LEONE.

Missionary Papers

FOR THE USE OF THE

WEEKLY AND MONTHLY CONTRIBUTORS

TO THE

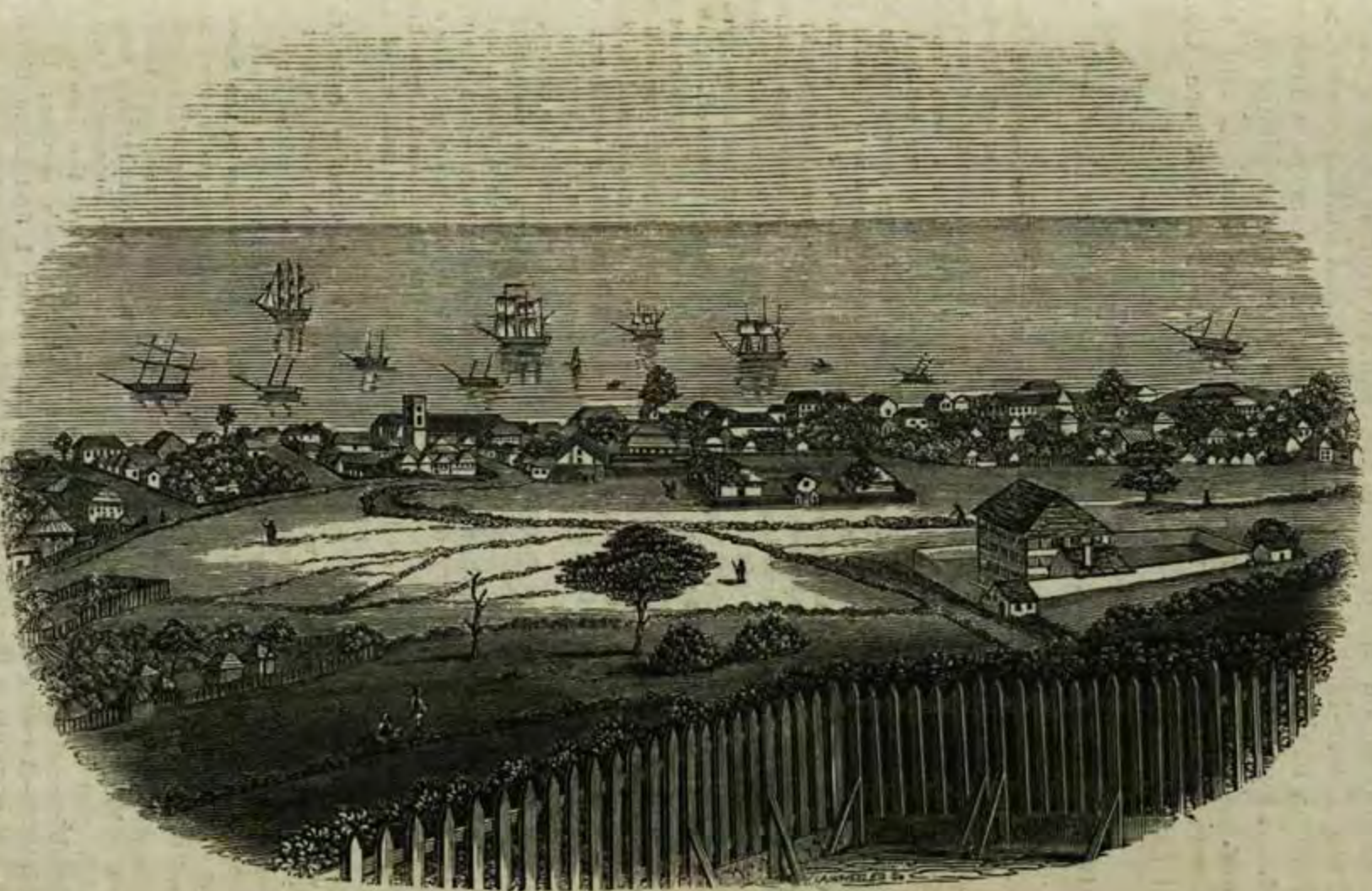
CHURCH MISSIONARY SOCIETY.



CHURCH MISSION SETTLEMENT AT BATHURST, IN SIERRA LEONE.

Church Missionary Paper

FOR THE USE OF WEEKLY AND MONTHLY CONTRIBUTORS.



VIEW OF SIERRA LEONE.

No. LXXXIX. *Lady Day*, 1838.

[Printed by R. Watts, Crown Court, Temple Bar

Church Missionary Paper

FOR THE USE OF WEEKLY AND MONTHLY CONTRIBUTORS.



MARKET-HOUSE AT HASTINGS, SIERRA LEONE.



A CHRISTIAN LIBERATED AFRICAN IN CONVERSATION WITH MANDINGOES.—*Vide* p. 15.

Church Missionary Paper

FOR THE USE OF WEEKLY AND MONTHLY CONTRIBUTORS.



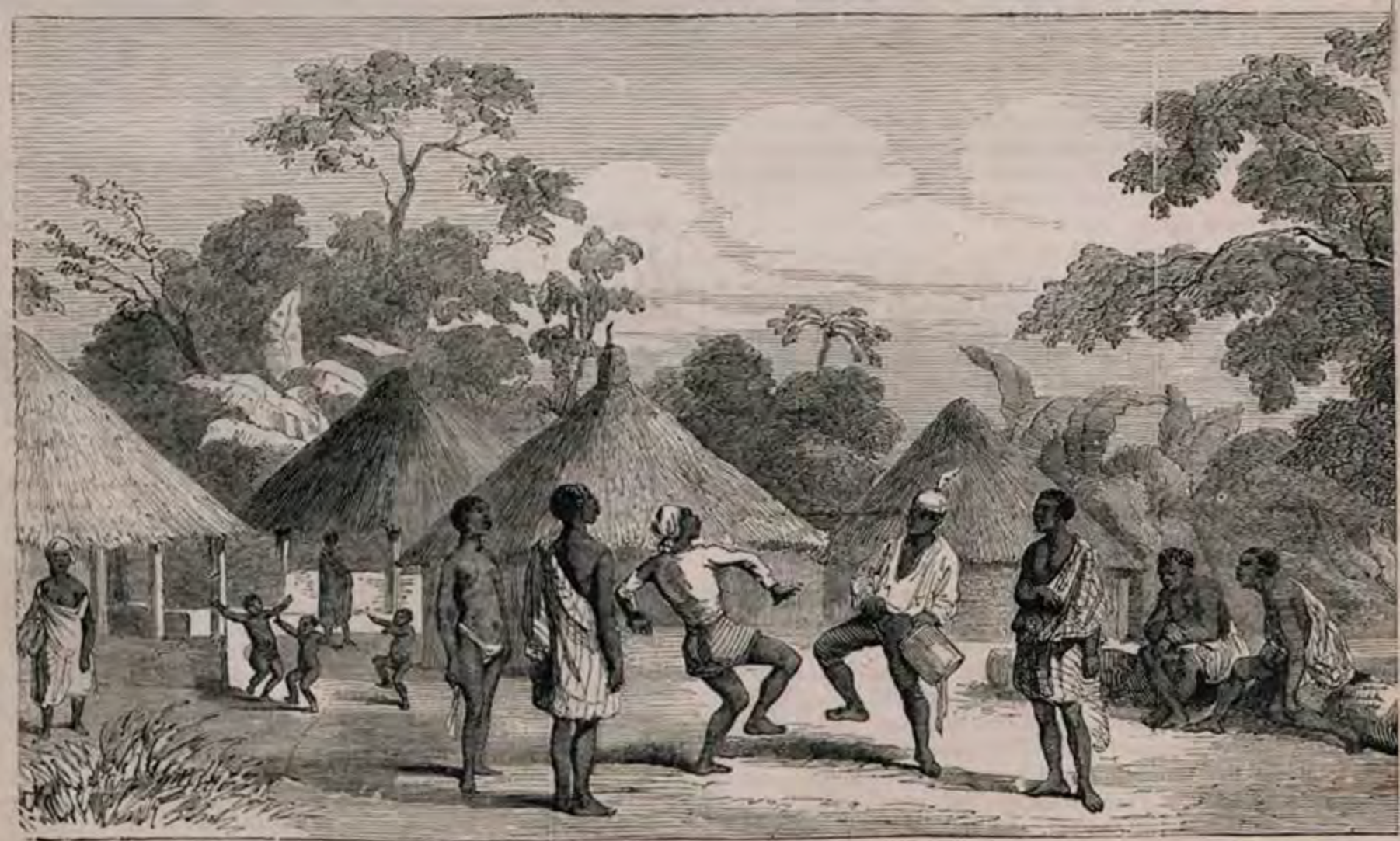
MR. BEALE SEIZING THE EGUGU.



THE GRAVEYARD AT KISSEY, SIERRA LEONE.—*Vide* p. 159.



CHRIST CHURCH, PADEMBA ROAD, SIERRA LEONE.



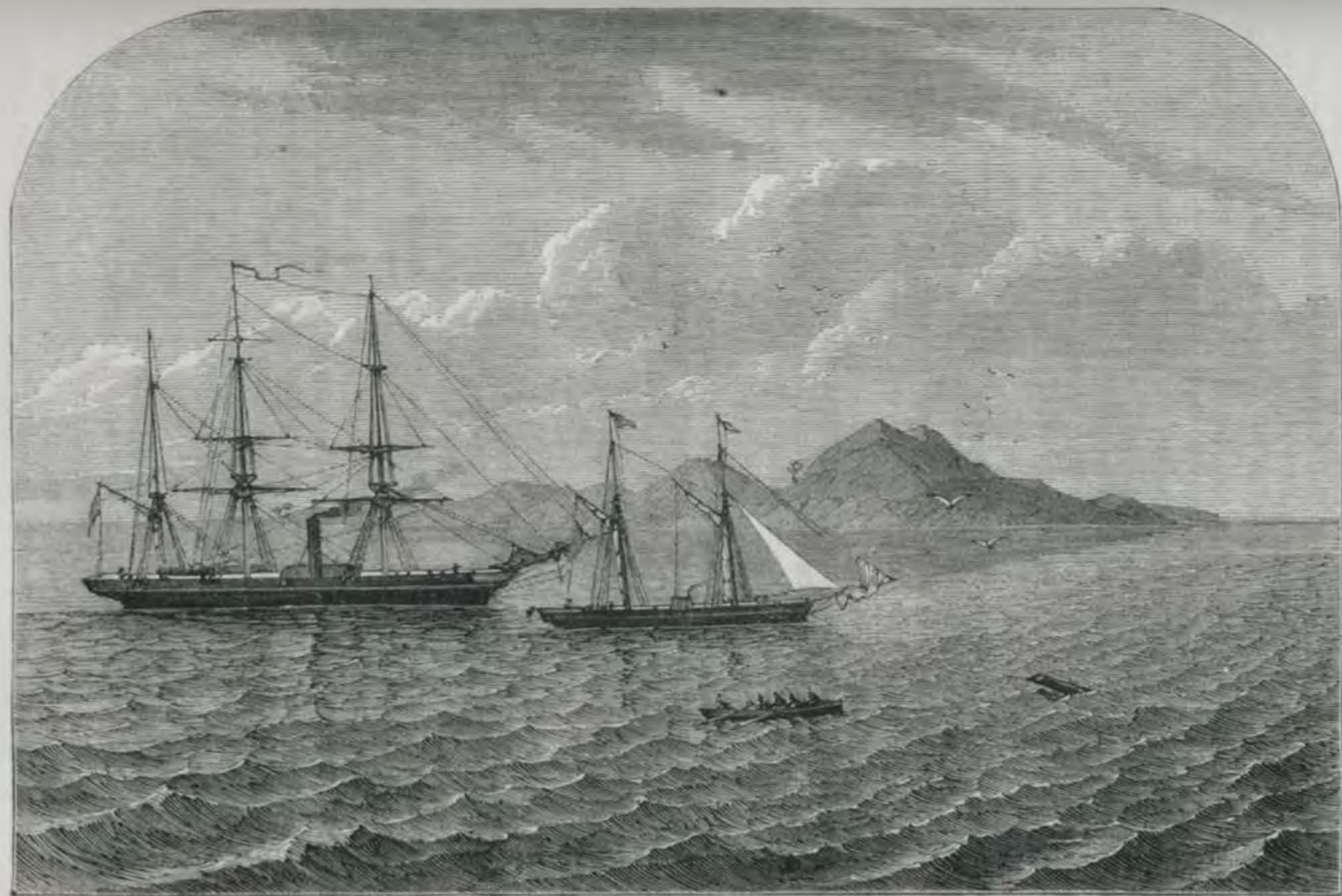
SHERBRO VILLAGE, SIERRA LEONE.



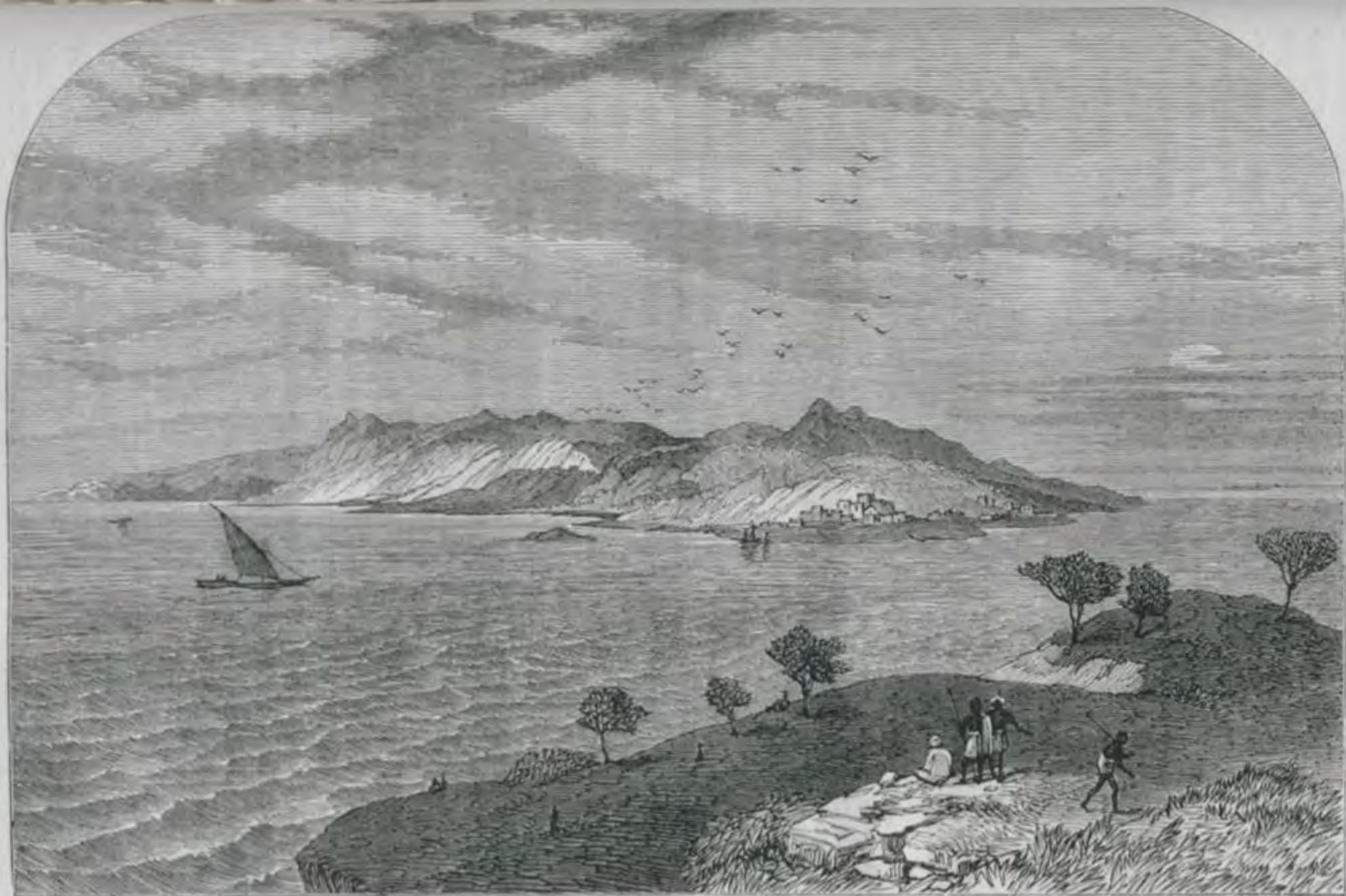
L. A. GOOD - KISSY LANDING SLAVES FROM PRIZE TO "SPRING" - C. 1864 - ALABAMA - PRAC. - PLANTER AND SELLER



YORK, SIEBBA LEONE. (*From a Drawing.*)



THE BANANAS.



KENT, SIERRA LEONE, FROM THE BANANAS.



THE EGUGU, SIERRA LEONE.



WATERLOO MARKET, SIERRA LEONE.





J. A. Crother





Landing Pier Free Town, showing the Harbor Master's Office and Customs' Shed.



Colonial Secretary's Quarters & Offices Eastern View. George Street.



Catholic
Mission House Leicester Hill Sierra Leone



South Eastern View of the Freetown Gaol.



Cathedral from the North Western Angle. Water Street.



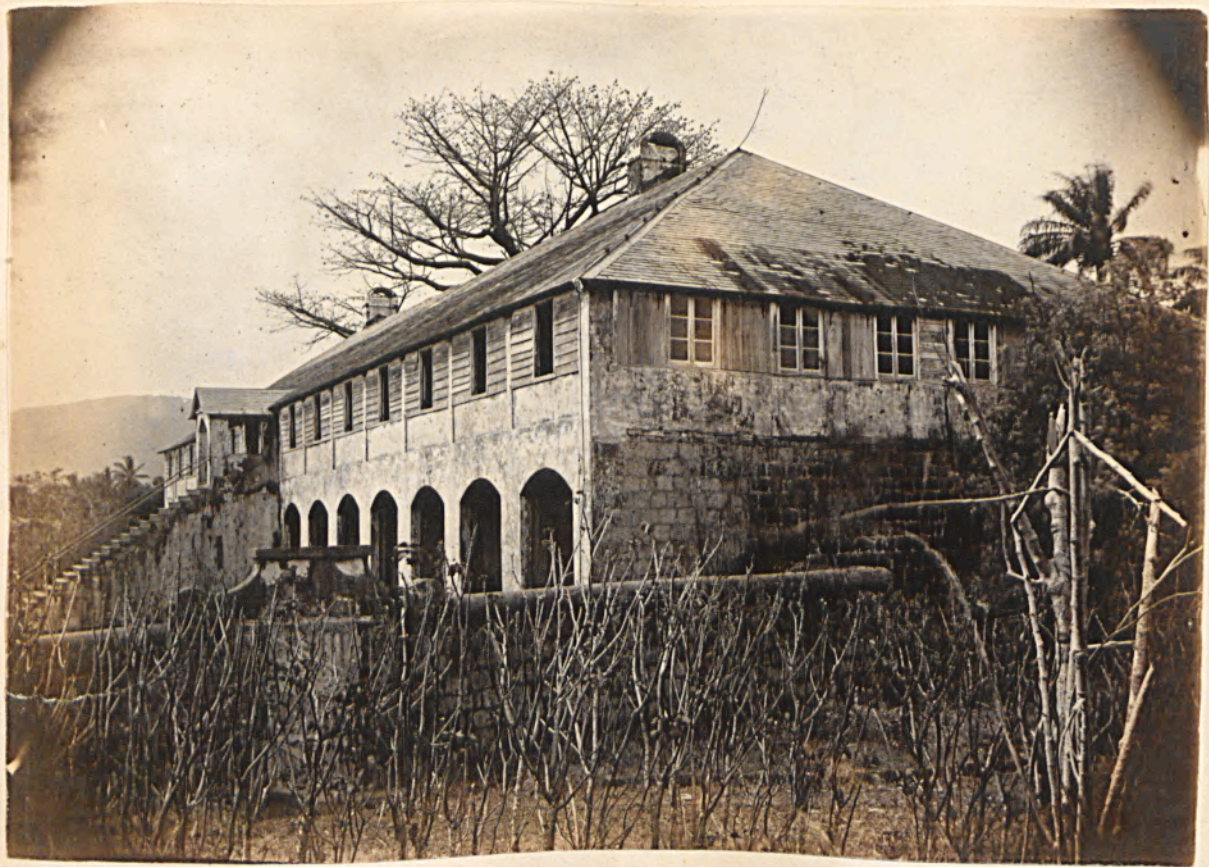
The Cathedral from North Eastern Angle.



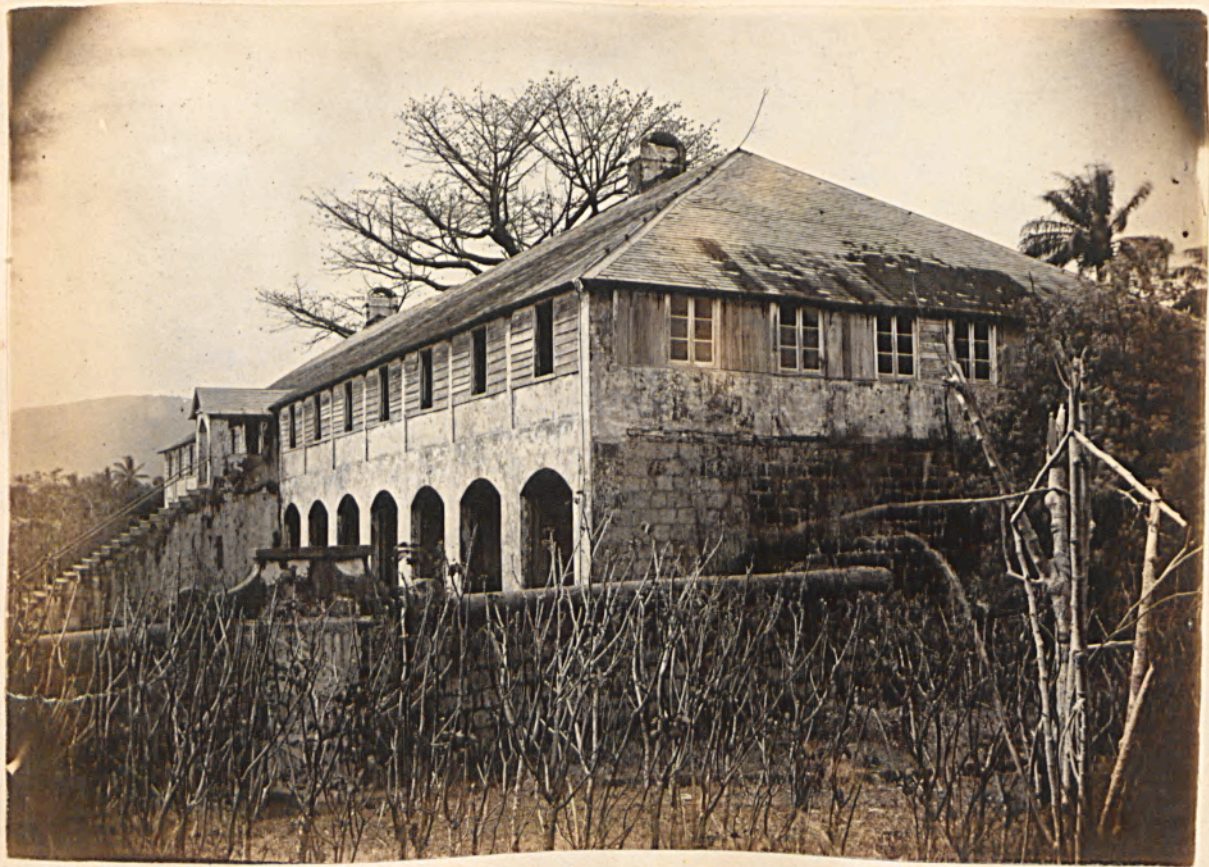
The Model School and Rawdon Street from North Western Angle.



The Model School from North Western Angle.



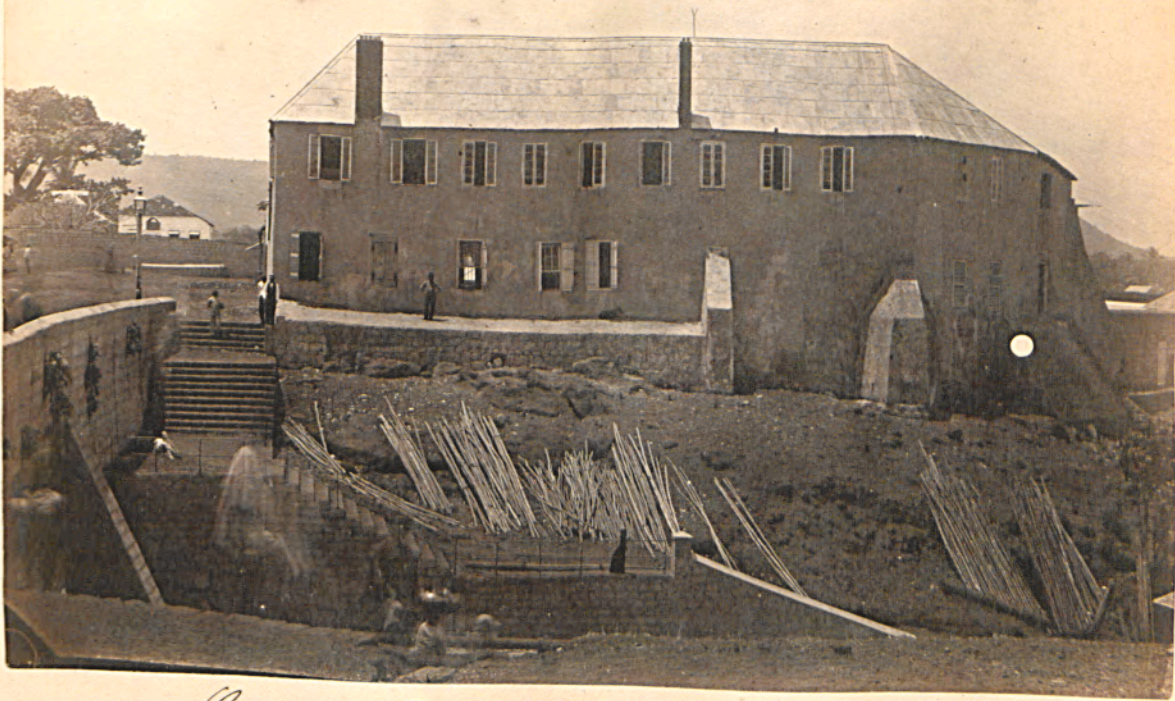
The late Wesleyan College, at King's Town, purchased by the Govt. for a reformatory.



The late Wesleyan College, at King's Town, purchased by the Govt. for a reformatory.



The Colonial Hospital Southern View.



Colonial Hospital Eastern Sicily.



House, Bathurst, Sierra Leone



Government School Charlotte, Sierra Leone,



On the road to Charlotte, Sierra Leone

The representation of the brig *Vigilante* from Nantes, a vessel employed in the Slave Trade, which was captured by Lieutenant Aldridge, in the River Benue, on the Coast of Africa, on the 15th of April 1822. She was 240 Tons burden & had on board at the time she was taken 345 Slaves. The Slaves were found lying on their backs on the lower deck, as represented below, those in the centre were sitting, some in the posture in which they are there shewn & others with their legs bent under them, resting upon the soles of their feet.

Fig. 1
Longitudinal Section of the Ship

Height between decks from deck to deck $4F^2/8F$

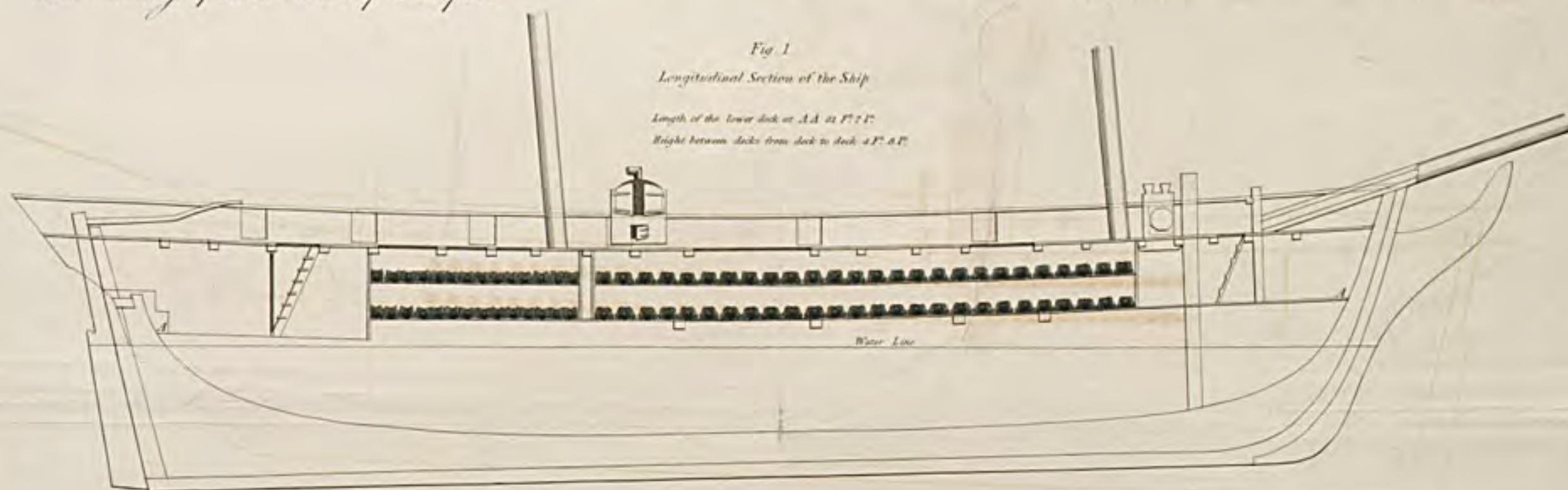


Fig. 2
Plan of the upper deck

Length of the upper dock at H is feet
 Breadth D" KK + P' + P"



*Iron Collar fastened about
the neck of the Slave*



Fig. 6



Fig. 7

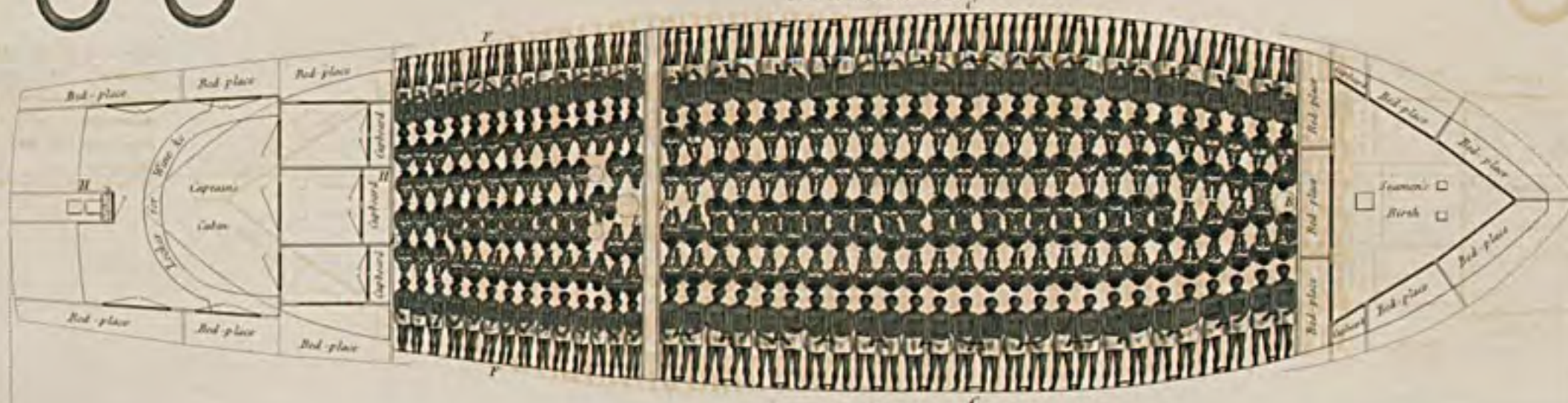


Fig. 3.

Fig. 3.



Fig. 4.
Plan of the lower deck



Length of the Men's room **KK** 67 feet
Breadth of D° C C 17; F° 4 1/2"
Length of the Women's room **EE** 30 F° 4 1/2"
Breadth of the D° IT 10 F° 4 1/2"
Length of the Cabin **HH** 18 F°
Height of the D° 9 F° 4 1/2"
The Number of Stairs stored in the Men's room 113
D° Women's room 120

Fig. 5



Walter



Drawn by G. C. Mitchell, from a sketch by J. E. F. Fawcett

J. E. F. Fawcett

LIBERATED AFRICANS, GAMBIA.



[SLAVE BARRACoon.]





The Liberated African Yard, Bathurst.